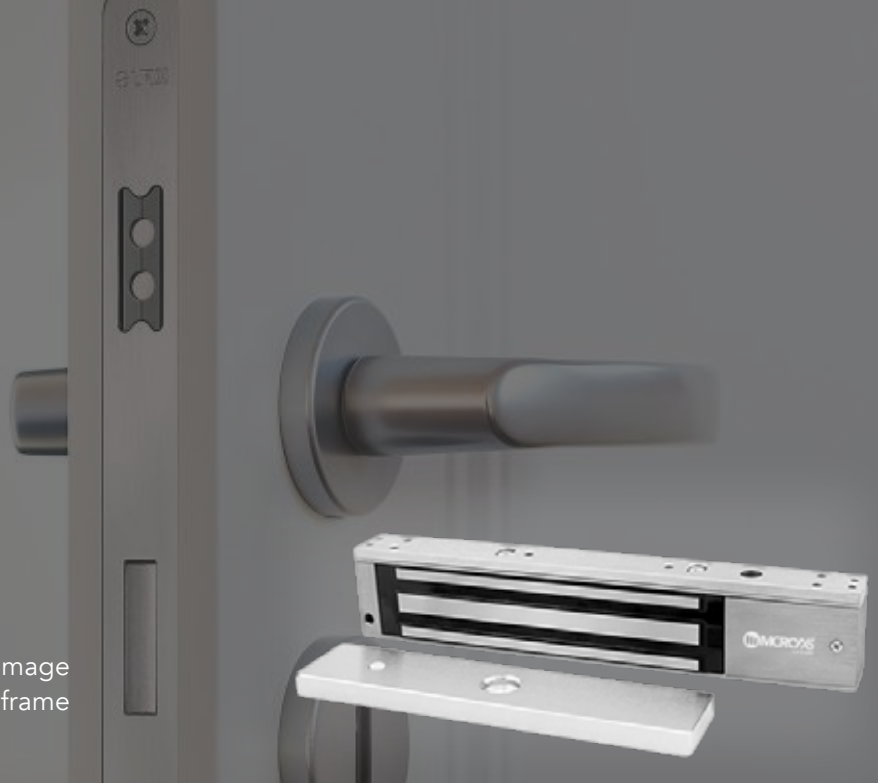


MX-800MLWB

Electromagnetic Gate Lock

- Without indicator lights.
- Waterproof IP65 Customization Available.
- Holding Force: 380kg (800Lbs).
- Lock Size: 285L*55W*29H (mm).
- Armature Plate:190L*45W*11H (mm).
- Current Draw: 12V/500mA 24V/250mA.
- No residual magnetism, no mechanical damage 90 degrees open for all kinds of doors with frame With Buzzer Customization Available.



Overview

MX-800MLWB, single door magnetic lock, specially used to normal glass door, wooden door, metal door, fire doors, and all kinds of door. Hoisting design, saves time and power when installation. Inward door, frameless glass door, narrow door all have a complete set of accessories. Special Anti-residual magnetic design makes automatic access control safer and more convenient.

Features

1. With the door status signal output, passed 800lbs super static linear tension tests.
2. Anti-residual magnetic design, keep constant tension.
3. Built-in reverse current protection device (MOV), performance stability, safety coefficient is higher.
4. Wear materials, durable.
5. Electromagnetic suction work completely, there is no mechanical failure.
6. Shell with high strength alloy material, anode hardening treatment.
7. Lock body with double insulation treatment.
8. Through the European CE and ROHS, MA certification in China.



MX-800MLWB

Electromagnetic Gate Lock

Specification

Model	MX-800MLWB
Holding Force	380kg (800Lbs)
Lock Status Sensors	NO
Optional Functions	LED, Relock Delay Timer, Buzzer
Rated Operating Voltage	12/24VDC
Surface finish for magnet	Zinc plated
Surface finish for armature plate	Zinc plated
Ambient temperature in °C	-10~+55°C (14-131F)
Suitable for	Wooden , Aluminum , Glass , Fireproof & Metal
Magnets Dimensions (L x W x D)	285Lx55Wx29H (mm)
Armature Plate Dimensions (L x W x D)	190Lx45Wx11H (mm)
Weight in kg	2.6kg
CE-mark for building	Yes
Rohs-mark for building	Yes
Current consumption	12V/500mA 24V/250mA

Related Images

