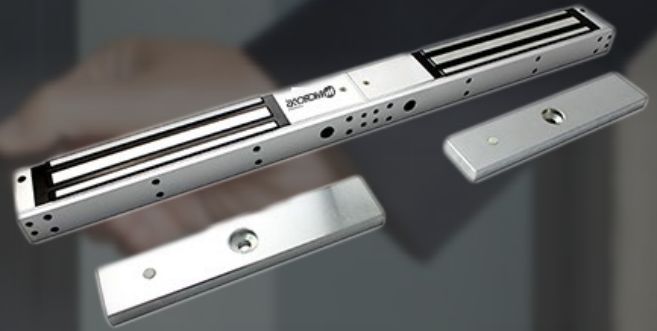


MX-680DLD

Double Electromagnetic Lock

- LED display and door position detection output.
- Voltage:DC12V or DC24V (adjustable).
- Current Draw: 12V/480mAx2 24V/240mAx2.
- Lock Size: 500L*42W*25H(mm).
- Armature Plate: 180L*32W*11H(mm).
- With Timer & Buzzer Customization Available.

Weight: 4kg.



Overview

MX-680DLD, double door magnetic lock, with the door state signal feedback , specially used to normal glass door, wooden door, metal door, fire doors, small doors, the most widely used. Hoisting design, saves time and power when installation. Inward door, frameless glass door, narrow door all have a complete set of accessories. Special Anti-residual magnetic design makes automatic access control safer and more convenient.

Features

- 1.With LED (double color indicate), has door status signal output, passed 600lbs super static linear tension tests.
- 2.Anti-residual magnetic design, keep constant tension.
- 3.Built-in reverse current protection device (MOV), performance stability ,safety coefficient is higher.
- 4.Wear materials, durable.
- 5.Electromagnetic suction work completely, there is no mechanical failure.
- 6.Shell with high strength alloy material, anode hardening treatment.
- 7.Lock body with double insulation treatment.
- 8.Through the European CE and ROHS, MA certification in China.



MX-680DLD

Double Electromagnetic Lock

Specification

Model	MX-680DLD
Holding Force	2x280kg (600Lbs)
Lock Status Sensors	NO, NC, COM
Optional Functions	Relock Delay Timer, Buzzer
Rated Operating Voltage	12/24VDC
Surface finish for magnet	Zinc plated
Surface finish for armature plate	Zinc plated
Ambient temperature in °C	-10~+55°C (14-131F)
Suitable for	Wooden, Aluminum, Glass, Fireproof & Metal
Magnets Dimensions (L x W x D)	500Lx42Wx25H (mm)
Armature Plate Dimensions (L x W x D)	180Lx32Wx11H (mm)
Weight in kg	4.0kg
CE-mark for building	Yes
Rohs-mark for building	Yes
Current consumption	12V/500mA 24V/250mA
Lock Status Indicator	Red and Green, double color LED

Related Images

