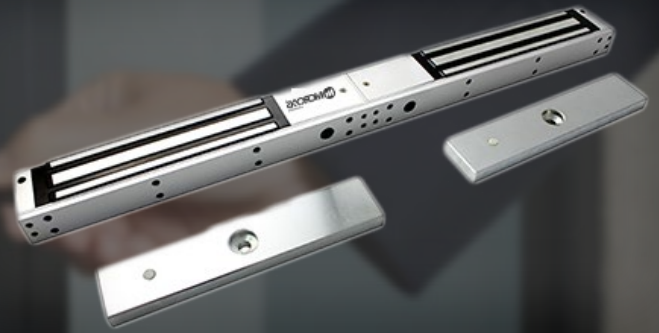


MX-660D

Double Magnetic Lock

- Voltage: DC12V or DC24V (adjustable).
- Current Draw: 12V/480mA x2 24V/240mA x2.
- Lock Size: 500L*42W*25H(mm).
- Armature Plate: 180L*32W*11H(mm).
- With Timer & Buzzer Customization Available.
- Weight: 4kg.



Overview

MX-660D, double door magnetic lock, specially used to normal glass door, wooden door, metal door, fire doors, small doors, the most widely used. Hoisting design, saves time and power when installation. Inward door, frameless glass door, narrow door all have a complete set of accessories. Special Anti-residual magnetic design makes automatic access control safer and more convenient.

Features

1. With LED (double color indicate), has door status signal output, passed 2x600lbs super static linear tension tests.
2. Built-in reverse current protection device (MOV), performance stability, safety coefficient is higher.
3. Anti-residual magnetic design, keep constant tension.
4. Wear materials, durable.
5. Electromagnetic suction work completely, there is no mechanical failure.
6. Shell with high strength alloy material, anode hardening treatment.
7. Lock body with double insulation treatment.
8. Through the European CE and ROHS, MA certification in China.



MX-660D

Double Magnetic Lock

Specification

Model	MX-660DLD	MX-660DTLD
Holding Force	2x260kg (600Lbs)	
Lock Status Sensors	NO	
Optional Functions	LED, Relock Delay Timer,	With Buzzer
Rated Operating Voltage	12/24VDC	
Surface finish for magnet	Zinc plated	
Surface finish for armature plate	Zinc plated	
Ambient temperature in °C	-10~+55°C (14-131F)	
Suitable for	Wooden, Aluminum, Glass, Fireproof & Metal	
Magnets Dimensions (L x W x D)	500Lx42Wx25H (mm)	
Armature Plate Dimensions (L x W x D)	180Lx32Wx11H (mm)	
Weight in kg	4.0kg	
CE-mark for building	Yes	
Rohs-mark for building	Yes	
Current consumption	12V/500mA 24V/250mA	

Related Images

