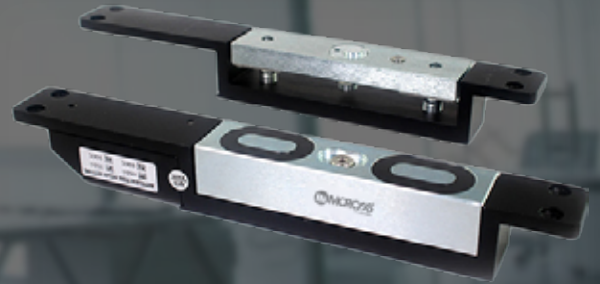


MX-2700SM

Shear Lock

- With delay and signal output.
- Lock Size: 267L*30W*34H(mm).
- Armature Plate: 267L*30W*34H(mm).
- Powerful shear holding force provides high security.
- Shear holding force: 2000lbs(1000kg).
- Compatible with double swing doors
- Horizontal or vertical installation.
- Anti-Residual magnetism design.



Overview

MX-2700SM, Embedded mounted, super shear lock, integrated design without external board, exquisite appearance with high safety coefficient, support 2000lbs shear force, suitable all kinds of doors, magnetic lock was embedded into the middle or above of the door frame, use magnetic force to catch up door leaf, elegant appearance. Inward door, frameless glass door, narrow door all have a complete set of accessories. Special residual magnetic design makes automatic access control safer and more convenient.

Features

1. Particular shear design, passed 2000lbs super static linear tension tests.
2. Anti-residual magnetic design, keep constant tension.
3. Built-in reverse current protection device (MOV), performance stability , safety coefficient is higher.
4. Wear materials, durable.
5. Electromagnetic suction work completely, there is no mechanical failure.
6. Shell with high strength alloy material, anode hardening treatment.
7. lock body with double insulation treatment.
8. Through the European CE and ROHS, MA certification in China.



MX-2700SM

Shear Lock

Specification

Model	MX-2700SM
Holding Force	Max 2000lbs (1260kg)
Lock Status Sensors	Dry contact NO, NC, COM
Relock Delay Timer	0, 3, 6, 9 seconds open time delay is adjustable
Rated Operating Voltage	DC 12V or 24V (selectable)
Current consumption	540mA@12VDC / 300mA@24VDC
Optional Functions	LED, Buzzer
Surface finish for magnet	Zinc plated
Surface finish for armature plate	Zinc plated
Communication	TCP/IP, USB Host, USB client
Ambient temperature in °C	-10 ~ +55°C (14-131F)
Suitable for	Wooden & Aluminum & Glass & Fireproof & Metal
Magnets Dimensions(L x W x D)	267L*30W*34H (mm)
Armature Plate Dimensions(L x W x D)	267L*30W*34H (mm)
Weight in kg	2.3kg
CE-mark for building	Yes
Rohs-mark for building	Yes

