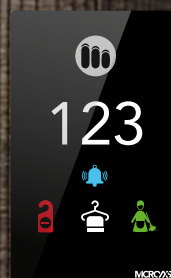


15D Touch Doorplate

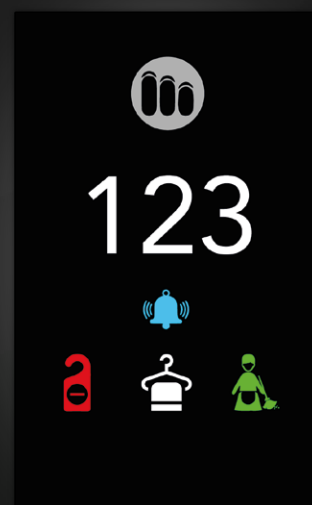


Overview

This panel is 15D model touch doorplate, our latest exclusive design panel, with function buttons option of hotel logo, room number, DND, MUR, Laundry, check in, wait, doorbell etc. It is with LED back light. When installed, even in darkness can be easily seen, and guide the room number, very practical. The LED back light color standard is white, also can be done white/red/green/orange/blue, etc. It is 220V AC just need L N cable connected, same install method as our 15D same appearance structure touch doorplate. The content design is very nice. The glass color also can be customized.

140*225mm Size Different Color Tempered Glass

This doorplate is very nice, standard white, black, gray colors available, other colors (white/black/silver/champagne, etc.) also available personalized made in bulk order. Panel size standard is 140*225mm, other size also available upon request to meet different decorate. It is 100% tempered glass, not like other normal glass which will be fragile when broken.



15D

15D Touch Doorplate

Different Language Words and Icons Content

All the content on the panel can be designed and printed in different language words, icons, content just as the project need, suitable for global different projects request.

Big Room Number with Different Font Design

There is big size room number display on the panel, with big LED back light size area, very practical, even in distance can be easily seen and find the room fast. And the font can be designed upon request.

Different Function (LOGO/number/DND/MUR/Laundry/Check in/Wait/Bell)

The function buttons on the outdoor panel can be:

LOGO/Number/DND/MUR/Laundry/Wait/Check-in/Wait/Bell, choice as need, other parts matched accordingly. If you need other special function also can be customized in big bulk order.

Different LED Backlight Colors (RED/Green/White/Orange/Blue etc. as need)

Different colors good quality RGB LED backlight display, standard colors are red/green/blue/white/Orange, you can choose as need. If you need other special colors, will need special customized in big bulk order, we can design accordingly.

Indoor Control Panel and 40A Key Card Switch 2 Connected, or Single

This indoor control panel is made in 2 connected panels, left is 40A big Load card switch, right is DND and MUR touch service request panel. Also you can choose use single key card switch + single control panel.



15D

15D Touch Doorplate



High Touch Sensitivity with Big Touch Area

The touch backlight are big, reasonable design, and touch function are using good specification, high sensitivity, for good operating feelings.

2 Connected Zinc Alloy Metal Stand

The 2 connected panel back with zinc alloy metal stand, durable and high quality level, clear sticker and wiring guide, make whole panel luxury and easy to wiring and install.

Operating Introduce

Laundry on, DND off automatically

MUR on, DND off automatically

Laundry and MUR can on same time.

When the guest in the room press indoor panel DND, indoor DND red LED will on, at the same time, the outdoor display panel red DND will also be on. When the guest in the room press indoor MUR, indoor MUR green LED will on, and the indoor DND will off automatically and same time outdoor panel MUR on DND also off automatically. When the visitor press bell touch, will ring. (If the DND is on then will flash and no bell rings)

Different Colors Choice

The glass color standard is white, black or gray, other colors will be customized in big bulk order.



15D

15D Touch Doorplate

Status Keeping Record After Card Remove or Card Remove

This panel we special made with status keeping record after card remove or power off. Example:

When the guest press DND do not want to be disturbed before leave the room, then, card move, the DND status will be on display in the outdoor panel.

When the guest press MUR before leave the room, need clean the room, then, card move, the MUR status will be on display in the outdoor panel, so the hotel service can come to provide service.

When the guest press DND or MUR service, then, there is suddenly power off, after power on again, the service request status on the panel will be on back and display automatically.

Specification

Model	15D
Material	4MM thickness Tempered glass
Color	Black standard (white/gray also available, other color can be customized)
Size	140*225MM (Little bigger size also can be customized)
voltage	80-250V AC (Also have model 12-24V DC RS485, or MODBUS version)
Function buttons	Logo/ Big numbers / DND / MUR / Laundry/Wait/Check-in/Bell touch, option as need
Words printed	Different language buttons and icons can be designed and printed
LED indicator	Different buttons can be done different colors LED, such as red/green/orange/blue/white
Sticker or print colors	Different colors sticker or print effect also available in bulk order
Room status function	Support
Status Record	With status recorder function when power off
Touch area	Large area Capacitive touch
High sensitivity	Easy touch, with high sensitivity
Operating temperature	-10°C~60°C
Working humidity	0~95%
Whole set	Same appearance series option: outdoor panel + indoor panel + bell + key card switch



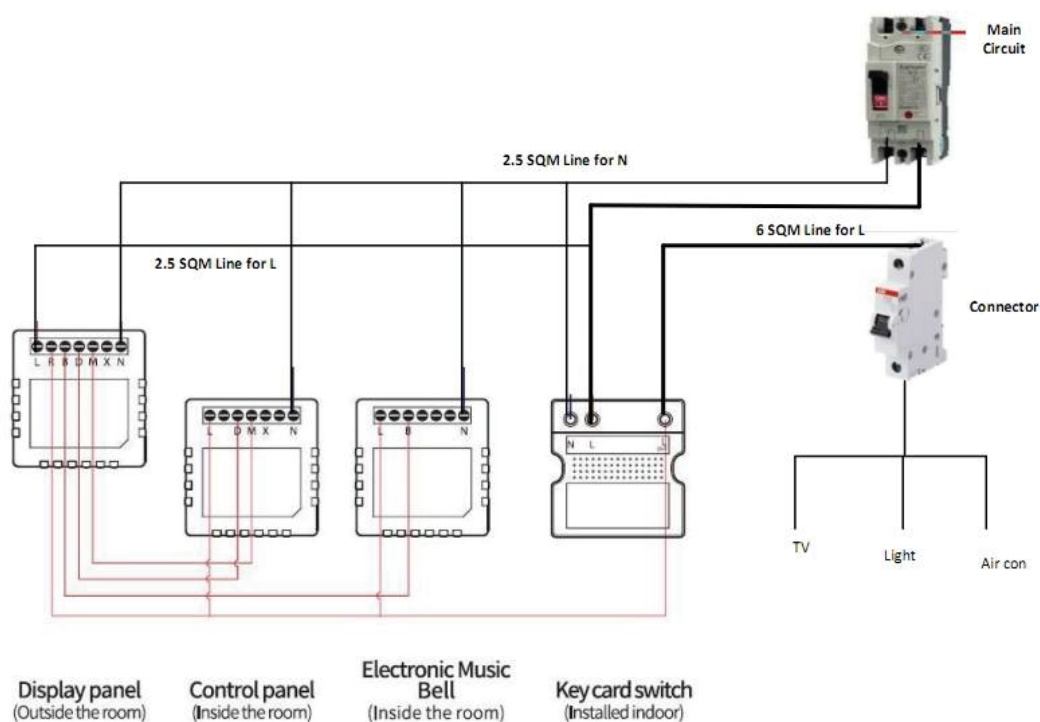
15D

15D Touch Doorplate

Wiring

Below Standard 220V AC Wiring Diagram example

- *** Touch panel, L and N cable connect for outdoor panel and indoor panel power on,
- *** Outdoor panel back "D" Do not disturb port connect to indoor panel Donot disturb port,
- *** Outdoor panel back "M" Make up room port connect to indoor panel Make up room port
- *** Outdoor panel back "X" Laundry port connect to indoor panel Laundry port
- *** Outdoor panel back "B" port connect to the bell device L port, that is to say, bell device power is from outdoor panel
- *** Bell device N connect to the main N cable.
- *** Outdoor panel back "R" port connect to the key card switch back L out por, for room status indicator.



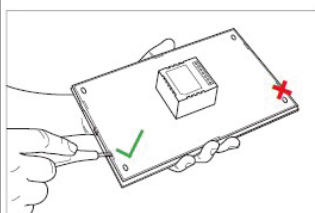
15D

15D Touch Doorplate

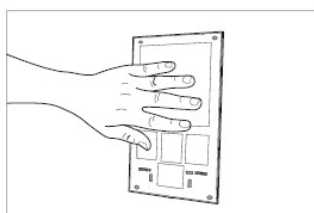
Installation

• Install Doorplate

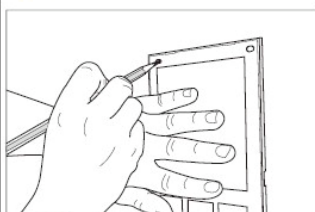
⚠ Please do not disassemble or install violently to cause damage. We would assume no responsibility.



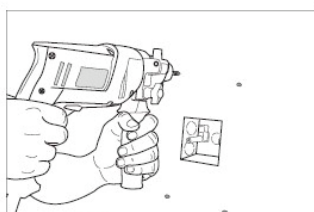
1. Open doorplate from bottom snap joint.



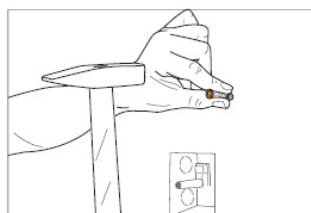
2. Put product in installation box.



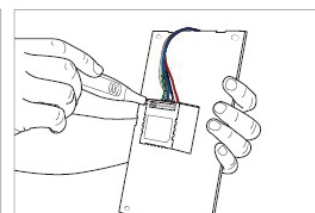
3. Mark the holes.



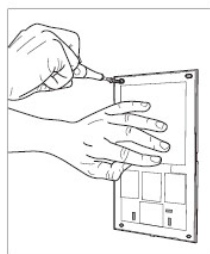
4. Drill the holes.



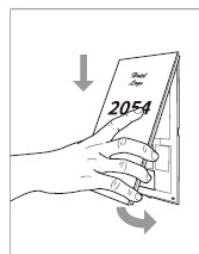
5. Install expansion bolt capsules.



6. Connect wires according to wiring diagram.



7. Tighten the installation screws.



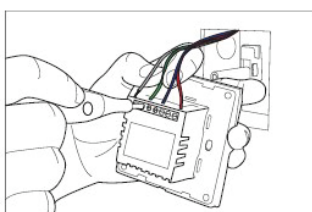
8. Snap the faceplate from top to bottom.



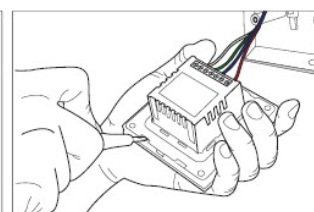
9. The install is complete.

• Install Control Panel

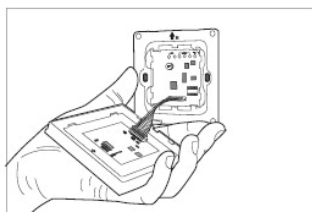
⚠ Please do not disassemble or install violently to cause damage. We would assume no responsibility.



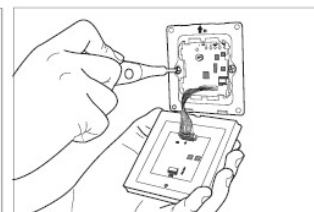
1. Connect wires according to wiring diagram.



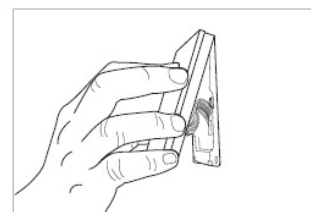
2. Open product from snap joint.



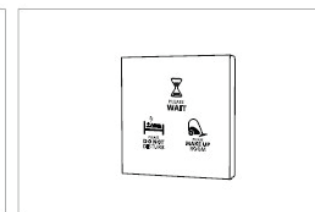
3. Put product in installation box.



4. Tighten the installation screws.



5. Snap the faceplate from top to bottom.



6. The installation is completed.

○ Troubleshooting

No Display for Doorplate Light

Please make sure wiring is correct and power is connected.

No Response for Touch Keys

Please turn off power and restart and make sure wiring is correct.

If you still have unsolved problems of installation or using, please call GTD customer service.