

MX-EXCEL Series

Magnetic Lock



Overview

The MX-EXCEL Architectural Series full featured magnetic locks are easier to install and provide superior, less obtrusive appearance compared to stainless steel epoxy sealed magnetic locks. Full monitoring is standard. The quick mount assembly reduces installation time compared to epoxy sealed magnetic locks.

The value priced Excel MX-M6200-MBS Commercial Series full featured magnetic lock is made of an epoxy sealed satin stainless steel housing and utilizes the same mounting template as major competitive brands. Full monitoring is standard. Recommended for interior doors or outdoor gate applications.

MX-M6200-MBS

Features

- Epoxy sealed electronics, tamper resistant and weatherized for indoor and outdoor use.
- Magnetic Bond Sensor indicates door locked with full holding power.
- Retrofits Securitron and Locknetics 70 locks.
- Door Status indicates door open or closed.
- Stainless steel machine screws and blind nuts.
- 10 ft [3.05m] jacketed, stranded conductor cable.
- Architectural stainless steel housing, US32/630.
- Dual voltage 12/24VDC.



MX-EXCEL Series

Magnetic Lock

Specification

Model	MX-M6200-MBS
Holding Force	1200 lbs / 545 kg
Housing	Stainless steel epoxy filled, all internal components sealed and weatherized
Lock	8" L x 3" H x 1-49/64" D; (203L x 73.5H x 45.7D mm)
Armature	6" L x 13/16" H x 2-11/16" D; (152 L x 20.63 H x 68.26 D mm)
Wiring	10 Ft [3.05 m] jacketed, stranded conductor cable for power input and status outputs
Voltage	12/24VDC, field selectable
Current	250mA @ 12VDC; 125mA @ 24VDC
Magnetic Bond Sensor	SPDT, 250 mA @ 30VDC
Door Status Contact	SPDT, 250 mA @ 30VDC
Weight	12.0 lbs



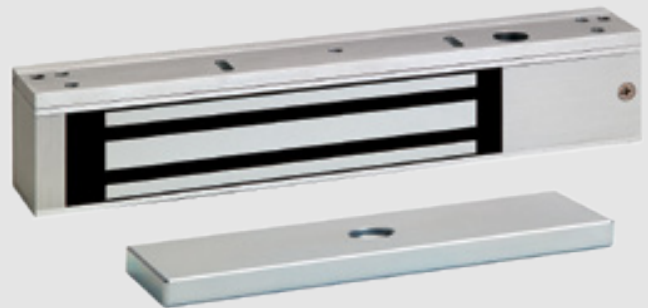
MX-EXCEL Series

Magnetic Lock

MX-M600-LED

Features

- Adjustable mounting bracket with choice of self drilling and tapping mounting screws or machine screws.
- Door status, lock status and Bi-color LED.
- Interlocking quick mount assembly.
- Wire access chamber with terminal block.
- Dual voltage 12/24VDC.
- 628 Clear anodized aluminum.



Specification

Model	MX-M600-LED
Holding Force	600 lbs / 272 kg
Lock	9-7/8" L x 2-7/8" H x 1" D; (250 L x 51 H x 26 D mm)
Armature	7-5/16" L x 1-1/2" H x 1/2" D; (186L x 38H x 13D mm)
Wiring	PC board with voltage and current spike protection, instant release anti-residual magnetism circuit, terminal block for power input and status outputs
Circuitry	Voltage and current spike protection and instant release anti-residual magnetism circuitry
Voltage	12/24VDC, field selectable
Current	500 mA @ 12VDC; 250 mA @ 24VDC
Magnetic Bond Sensor	SPDT, 2 Amp @ 30VDC
Door Status Contact	SPDT, 250 mA @ 30VDC
Weight	7.0 lbs



MX-EXCEL Series

Magnetic Lock

MX-M1200-LED

Features

- Epoxy sealed electronics, tamper resistant and weatherized for indoor and outdoor use.
- Magnetic Bond Sensor indicates door locked with full holding power.
- Retrofits Securitron and Locknetics 70 locks.
- Door Status indicates door open or closed.
- Stainless steel machine screws and blind nuts.
- 10 ft [3.05m] jacketed, stranded conductor cable.
- Dual voltage 12/24VDC.
- Architectural stainless steel housing, US32/630.



Specification

Model	MX-M1200-LED
Holding Force	1200 lbs / 545 kg
Lock	10-1/2" L x 2-7/8" H x 1-5/8" D; (266 L x 73 H x 41 D mm)
Armature	7-5/16" L x 2-3/8" H x 5/8" D; (186 L x 61 H x 16 D mm)
Wiring	PC board with voltage and current spike protection, instant release anti-residual magnetism circuit, terminal block for power input and status outputs
Circuitry	Voltage and current spike protection and instant release anti-residual magnetism circuitry
Voltage	12/24VDC, field selectable
Current	500 mA @ 12VDC; 250 mA @ 24VDC
Magnetic Bond Sensor	SPDT, 2 Amp @ 30VDC
Door Status Contact	SPDT, 250 mA @ 30VDC
Weight	10.0 lbs



MX-EXCEL Series

Magnetic Lock

Accessories

E Series Angle Brackets

Used for the extension of a narrow frame header mounting surface, the bracket provides additional surface area for proper lock mounting



E Series Stop Filler Plates

Used where the frame stop does not provide enough mounting surface, the filler bar provides enough additional surface area for proper lock mounting.



Top Jamb Mounting Kit For Inswing Doors



MX-ID12-MK

Glass Door Armature Mounting Kit



MX-GD12-MK