

MX-1091-BLA

Bolt Locks

The Spacesaver, first designed and patented by MICROAXS, is a fundamental innovation in electric locking technology for access control applications.



Features

Stainless Steel Bolt

Greater security is provided by the 0.625" diameter solid stainless steel bolt. The bolt rotates freely, making attempts to tamper or cut extremely difficult.

Specification Grade Solenoid

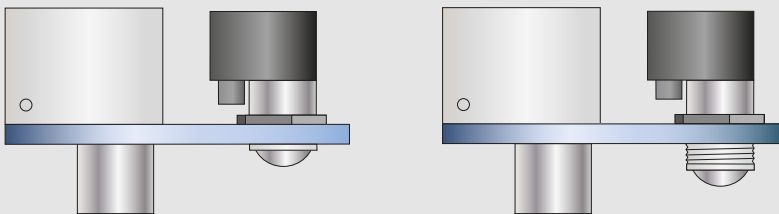
All Spacesaver lock solenoids are manufactured by MICROAXS to precision specifications. MICROAXS solenoids are capable of superior overall performance in both force and longevity, providing years of service compared to commercial grade solenoids.

Code Compliant

Classified in accordance with Uniform Building Code standard 7-2, "Fire Test for Door Assemblies".

Field Adjustable Auto-relock Switch

The automatic relock switch keeps the bolt retracted while the door is open. The door depresses the ball switch assembly on closure, causing the bolt to project automatically, locking the door. In addition, the ball switch assembly is bidirectional, permitting the locks to be used on swinging and sliding doors.



MX-1091-BLA

Bolt Locks

Lock Function

Failsafe

The MX-1091-BLA is locked when energized. Recommended for safety applications, it is intended that the door unlock automatically when power is interrupted by the access control, power failure or signal from a fire life safety system.

- Bolt Throw 0.75"

Figure 3A, 3B, 3C, 3D: Typical Frame Header or Side Jamb Installation

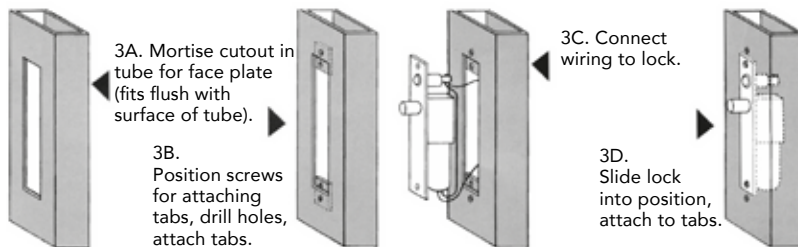
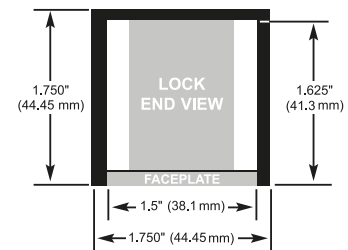


Figure 4: End View



Specification

| | |
|------------------------------------|---|
| Model | MX-1091-BLA |
| Face Plate | 8"L x 1-1/2"W x 1/8"D (unless noted differently) |
| Strike | 4"L x 1-1/2"W x 1/8"D |
| Frame Inner Dimension Requirements | 8"L x 1-1/2"W x 1-1/2"D |
| Bolt Material | Solid Stainless Steel |
| Bolt Diameter | 5/8" |
| Bolt Throw | 3/4" |
| Mounting Tabs | Two aluminum mounting tabs are provided for easy lock installation. |
| Dual Voltage Coil | 0.45 Amp @ 24VDC Continuous Duty 0.9 Amp @ 12VDC Continuous Duty |

